

Connect Pro+

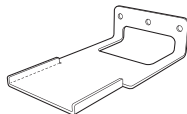
Receiver

Quick Start Guide

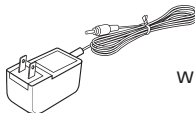
Package Contents



Receiver



Wall mount kit



3M power adapter
with multi-country plug set



Cable organizer x2



Warranty card



Quick start guide

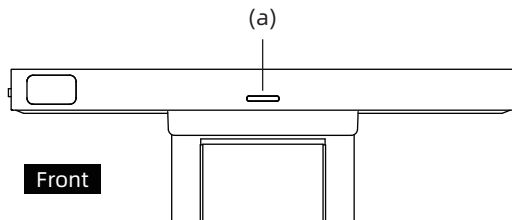


Safety documents



Scan for Multi-language Guide.
Kurzanleitung auf Deutsch scannen.
Guía rápida de escaneo en español
Scanner le guide rapide en français
Scansiona la guida rapida in italiano.
Zeskanuj skróconą instrukcję w języku polskim.
Escaneie o guia rápido em português.
日本語のクイックガイドを入手。
掃描以獲取中文使用說明書。

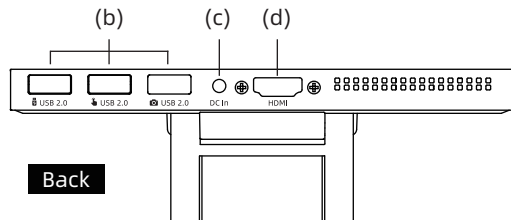
Overview



(a) LED indicator

Power on (Standby)		Static blue
Pairing (with Button)	Pairing in progress	Flashing purple
	Pairing successful	Static purple
	Pairing failed	Flashing red
Screen Casting	Connected (idle)	Flashing blue
	Sharing	Static purple
	Sharing failed	Static red

Note: When the screen is shared via Chromecast, the LED remains flashing blue.

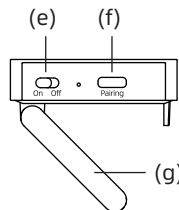


(b) USB-A 2.0 x3

(For connecting a camera, touch screen, or accessories such as a mouse and keyboard.)

(c) DC in

(d) HDMI Out

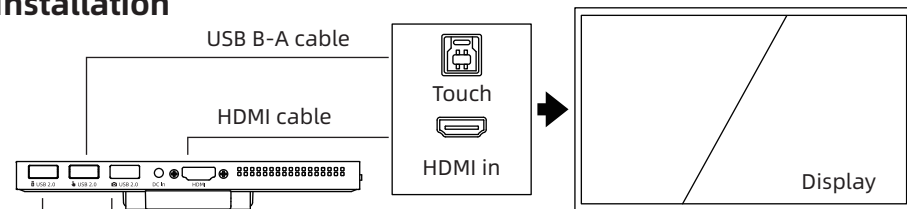


(e) Power switch

(f) USB-C port for pairing

(g) Mounting clip
(built-in magnet)

Installation



Mouse, Keyboard



Please visit our official website for supported cameras.

Important Note:

- **Power on the Connect Pro+ receiver** before connecting USB devices.
- When **multiple devices** with microphones or speakers are connected, the receiver will use the microphone and speaker of the device that was **connected last**.
- After **rebooting** the receiver, **replug** all devices.

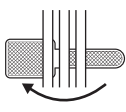
Webcam

Video bar

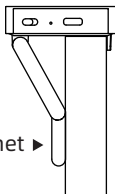
Mounting Clip

Easily attach to any display with built-in clip and magnets.

Keep cables neat with a cable organizers.

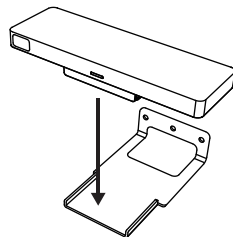


Magnet ▶



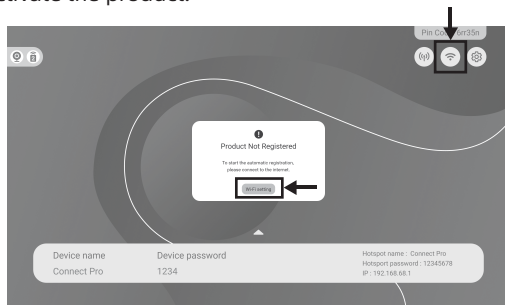
Wall Mount

Mount the wall bracket with screws and attach the Connect Pro Plus Receiver to it using its built-in magnets.



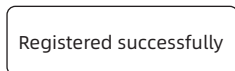
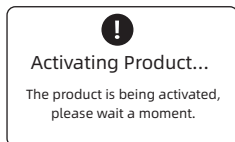
Activation

On first startup, a “Product Not Registered” message will appear. Follow the prompt to open Wi-Fi settings and connect to the network to activate the product.



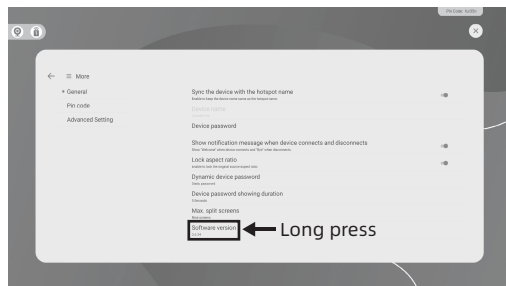
When connected to the internet, “Activating Product” appears.

When done, “Registered successfully” will be shown.

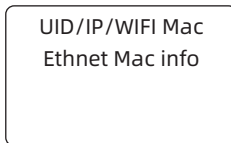


Check Product Activation

“Product Not Registered” will reappear after restart if the product has not been activated. To check activation status: Settings > More > General > Software version



Registered



Not registered



* Press “ ◀ ” to return to the setting page.

Connect Pro

With Connect Pro, any display can project content wirelessly from your devices through AirPlay, Miracast, Chromecast, the Innex Connect Pro Button, or Connect Pro Software. The built-in camera can also be accessed wirelessly from your laptop using the Button or Software.



Connect Pro Button



Airplay



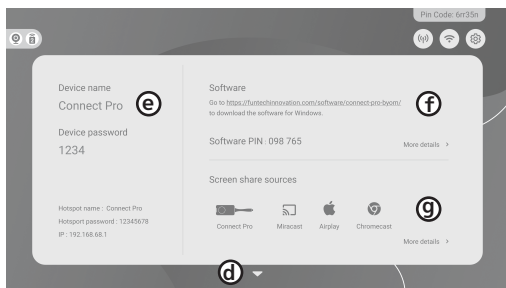
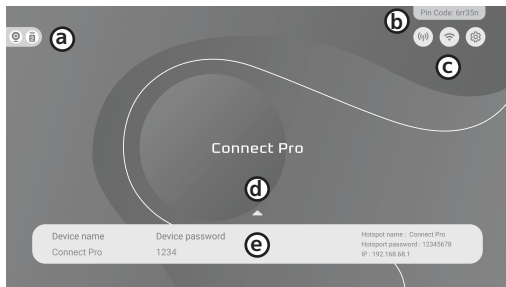
Miracast



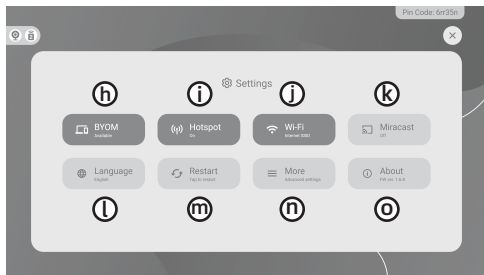
Chromecast



Connect Pro Software



	Item	Description
a	BYOM icon	Shows when BYOM is ready. If the icon is missing, please check: - Connected to the internet and product activated. - Camera connected to the display. - Moderator mode enabled in settings.
	Device icon	Displays the number of devices ready for screen sharing. Tap to view details.
b	Pin code	Enter this Pin code in the Connect Pro software to connect to the display and start screen sharing.
c	Hotspot	Displays the hotspot status and provides a link to the hotspot page.
	Wi-Fi	Showing the Wi-Fi status. Tap the icon and open Wi-Fi settings.
	Settings	Tap the icon to open settings.
d	Arrow	Tap to expand or collapse the info page.
e	Info	Displays basic device information, including the device name and password needed for screen sharing.
f	Software	Links to download the software for Windows and access the quick guide.
g	Source info	Displays screen share source options. Tap "More details" for a quick guide on how to use them.



	Item	Description
h	BYOM	Displays information about the camera, microphone, and speaker.
i	Hotspot	Advanced hotspot settings, including name, password, AP channel, etc.
j	Wi-Fi	Search for Wi-Fi networks to connect and view internet details.
k	Miracast	Enable/disable Miracast and adjust its resolution settings.
l	Language	Set the language for the Connect Pro interface.
m	Restart	Tap to restart Connect Pro.
n	More	Advanced settings, including device name, password, and Pin code.
o	About	Detailed device information, including MAC address, wallpaper settings, and restore options.

Wi-Fi & Hotspot Settings

1. Connect to 5GHz network

The hotspot channel of the Receiver will follow the current network. In the hotspot settings interface, it will display a message such as “Channel XXX auto-assigned”.

Note: If the auto-assigned channel is not in the Connect Pro Button's supported list, a message such as “Channel XXX auto-assigned; Connect Pro Button not supported.” will appear.

Try one of the following, then restart the hotspot.

1. Switching to a 2.4GHz network,
2. Enabling the hotspot without connecting to the internet
3. Setting the connected 5GHz network to a supported channel.

Connect Pro Button hotspot channel support list	
2.4GHz	1-13
5GHz	36, 40, 44, 48, 52, 56, 60, 64, 149, 153, 157, 161, 165

DFS channel issue

DFS (Dynamic Frequency Selection) channels may be temporarily unavailable due to regulatory radar detection, causing the device to automatically switch channels.

Using DFS channels may result in the Connect Pro Button showing a red light or being undiscoverable.

If you experience instability, it is recommended to switch to non-DFS channels (e.g., 36, 40, 44, 48, 149, 153, 157, 165).

2. Connect to 2.4GHz network or Hotspot without internet




In the hotspot setting page, you can choose between two regions for the 5GHz AP channel setting and select the broadcast channel.

5GHz AP Channel Setting	
Global	36, 40, 44, 48, 52, 56, 60, 64, 149, 153, 157, 161, 165
JPN/ISR/TUR/ZAF	36, 40, 44, 48, 52, 56, 60, 64

Screen Share

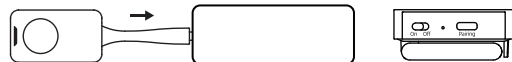
Network condition

***Before use, ensure your device is on the same network or connected to the Connect Pro+ hotspot, unless you are using the Connect Pro Button**

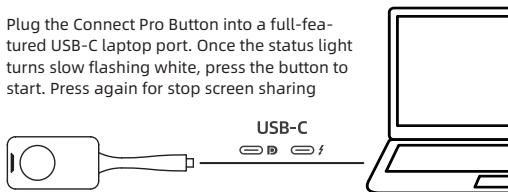
Source	 Wi-Fi	 Hotspot	 Miracast
Connect Pro Button	No network required	ON	OFF
Airplay	Either one or both ON		OFF
Miracast	ON	"OFF"	"ON"
Chromecast	Either one or both ON		OFF
Connect Pro Software	Either one or both ON		OFF

Connect Pro Button *Sold separately depending on the region

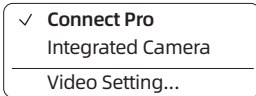
Please power on the Connect Pro+ Receiver and connect it to the display. Plug the Connect Pro Button into the receiver's USB-C port to start pairing automatically. Follow on-screen instructions to complete setup.



Plug the Connect Pro Button into a full-featured USB-C laptop port. Once the status light turns slow flashing white, press the button to start. Press again for stop screen sharing



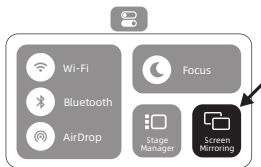
In video conferencing software, select "Connect Pro" as the camera, microphone, and speaker to use them wirelessly.



Airplay

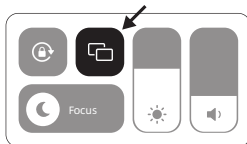
macOS

Click the icon at the top-right of the desktop to open the Control Center. Then select "Screen Mirroring", choose the device, and enter the password to start mirroring.



iOS

Open Control Center. Tap "Screen Mirroring", select the device, and enter the password to start mirroring.



Miracast

Before use, turn off the hotspot, keep Wi-Fi on, enable Miracast in settings, and ensure your device is on the same network.

Windows

Press "Windows key + K" to open the quick action menu, select the device, and enter the password shown on the display.



Android

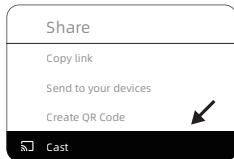
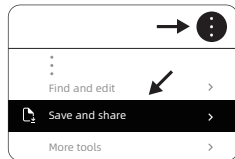
Swipe down to open settings and enable "Screen Cast." Select the device and enter the on-screen password. * Some Android phones use Chromecast.



Chromecast

Chrome browser (Windows PC, Mac, Chromebook)

click the "More" icon at the top-right, select "Save and share" > "Cast," then choose your Chromecast device. Use "Sources" to cast a specific tab or your entire screen.



Connect Pro Software

Scan the QR code to download from the official website



Find the device

1. Device name

When the device list appears, select the one you want and click Connect.

2. Pin code

Enter the Pin code for the software shown on home page, then click "Connect."

3. IP address ***Need to connect to receiver hotspot.***

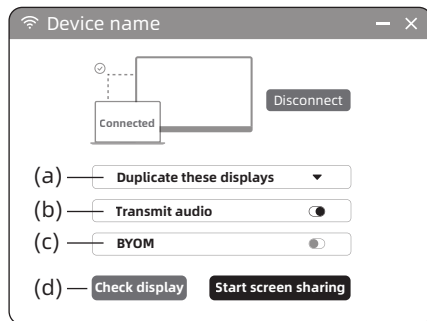
Enter the IP address for the software shown on home page, then click "Connect."



Ready to share

Once connected, adjust the sharing settings and start sharing.

(a) Share modes	Duplicate screen, extend screen, or App window
(b) Transmit audio	Send sound from your device to the display.
(c) BYOM (default OFF)	Use the camera, microphone and speaker from connected devices.
(d) Check display	Before sharing, check that the correct device is connected.



Specification

Transmission Distance	10m; 33ft
Screen Share Options	Connect Pro Button, Airplay, Miracast, Chromecast, Conenct Pro Software

Screen Share Resolution

Connect Pro Button	3840x2160 @30Hz; 1920x1080 @60Hz
Airplay	Up to 1920x1080 @60Hz (Depends on network conditions)
Miracast	1920x1080 @30Hz
Chromecast	Up to 1920x1080 @30Hz (Depends on network conditions)
Connect Pro Software	Up to 1920x1080 @30Hz (Depends on network conditions)

BYOM Camera Resolution

Connect Pro Button	1920x1080; 1280x720
Connect Pro Software	Up to 1920x1080 (Depends on network conditions)

System Requirements

Connect Pro Button	Windows 11 or later (Intel Core), MacOS - latest version recommended
Airplay	iOS / MacOS - latest version recommended
Miracast	Windows 11 or later (with Miracast-capable GPU and drivers), Android 4.2 or later (device dependent)
Chromecast	Google Cast compatible ; Chromecast built-in compatible Supported OS / Apps: Android 7.0 or later, iOS 14.0 or later, Windows 10 or later, macOS 11 or later, latest version ChromeOS, latest version of Chrome browser
Connect Pro Software	Windows 11 or later. CPU: Intel Core i5 or higher

Network

Network Latency	< 10ms
Connect Pro Button Requirement	Wi-Fi supported channels: 2.4Ghz (1-13), 5Ghz (36, 40, 44, 48, 52, 56, 60, 64, 149, 153, 157, 161, 165)
Security	Supports WPA2-PSK authentication and 128-bit AES encryption.

Receiver

Wi-Fi	2.4GHz/5GHz, IEEE 802.11 a/b/g/n/ac
I/O Ports	USB-A 2.0 x3
	USB-C (for pairing) x1
	HDMI Out x1
	DC In x1
Switch	Power on/off switch
Power	12V 1.5A
Storage Temperature	-10°C (14°F)- 60°C (140°F)
Operation Temperature	0°C (32°F)- 40°C (104°F)
Storage Humidity	≤ 80%
Operation Humidity	≤ 80%
Dimension	160 x 50 x 21.5mm / 6.3 x 2 x 0.9in
Weight	125g / 4.4oz

Package Contents

Connect Pro+ Receiver, Connect Pro Button x2, 3m/9.8ft Power adapter with multi-country plug set, Wall mount kit, Cable organizer x2, Quick start guide, Warranty card, Safety document

Certification

CE, FCC, ISED, NCC, MIC, KCC

Regulatory and Service Information

The products documented in this guide include aspects which are protected under their respective patent, copyright, design copyright, registered design and trademark laws. All other trademarks remain the property of their respective owners. This guide is distributed online. It may only be reproduced for use within the institution in which the product is used. For use outside of your institution, no part of this guide may be reproduced, transmitted, stored in a retrieval system or translated into any other language without the prior permission of our company. Please note that the content in this guide is protected under copyright law. Although every care has been taken in the compilation of this guide, our company accepts no responsibility for errors or omissions, or for damages resulting from the use of information contained within this guide.

Compliance

United States of America

This equipment has been tested and found to comply with the limits for a Class B digital device, pursuant to part 15 of the FCC Rules. These limits are designed to provide reasonable protection against harmful interference when the equipment is operated in a commercial environment. This equipment generates, uses, and can radiate radio frequency energy and, if not installed and used in accordance with the instruction manual, may cause harmful interference to radio communications. Operation of this equipment in a residential area is likely to cause harmful interference in which case the user will be required to correct the interference at his own expense. Do not make any changes or modifications to the equipment.

5.15 to 5.25 GHz band, UNII devices will be restricted to indoor operations to reduce any potential for harmful interference to co-channel Mobile Satellite System (MSS) operations. RF Radiation Exposure Statement Caution : This Transmitter must be installed to provide a separation distance of at least 20 cm from all persons.

Warning

This equipment has been tested and found to comply with the limits for a Class B digital device, pursuant to Part 15 of FCC Rules. These limits are designed to provide reasonable protection against harmful interference in a residential installation. This equipment generates, uses, and can radiate radio frequency energy. If not installed and used in accordance with the instructions, it may cause harmful interference to radio communications.

However, there is no guarantee that interference will not occur in a particular installation. If this equipment does cause harmful interference to radio or television reception, which can be determined by turning the equipment off and on, the user is encouraged to try and correct the interference by one or more of the following measures :

- Reorient or relocate the receiving antenna.
- Increase the distance between the equipment and the receiver.
- Connect the equipment to outlet on a circuit different from that to which the receiver is connected.
- Consult the dealer or an experienced radio/TV technician for help
- Any changes or modifications not expressly approved by the party responsible for compliance could void the user's authority to operate the equipment.

This device complies with part 15 of the FCC rules. Operation is subject to the following two conditions:

1. This device may not cause harmful interference
2. This device must accept any interference received, including interference that may cause undesired operation.

FCC ID : 2AC23-WXT26
RF model No. : WXT26M2601B
FCC ID : 2AC23-DCT12
RF model No. : DCT12R2511

Europe

We declare under our Sole responsibility that the Connect conforms to the essential requirements of European Union Directives 2014/53/EU Radio Equipment Directive (RED), 2014/30/EU Electromagnetic Compatibility Directive, 2014/35/EU Low Voltage Directive and 2011/65/EU Restriction of Hazardous Substances in Electrical and Electronic Equipment.



These devices comply with RF specifications when the device is used at 20 cm from your body



This device is restricted to indoor use when operating in the 5150-5350MHz frequency range in all EU/EFTA member states and Turkey.

United Kingdom

We declare under our sole responsibility that the Connect conforms to the essential UKCA requirements 2016 No : 1091. Electromagnetic Compatibility regulations 2016, 2016 No : 1101 Electrical Equipment Safety Regulation 2016, 2017 No : 1206 The Radio Equipment Regulation 2017, and UK SI 2016 No : 1091, RoHS Restriction of the use of certain Hazardous Substances in Electrical and Electronic Regulations 2012 - UK SI 2012 No : 3032.



Waste Electrical and Electronic Equipment (WEEE)

For more information concerning the correct disposal of these products, please contact your reseller.



Vous êtes responsable de remettre tous les appareils électriques et électroniques usagés à des points de collecte correspondants.

Pour en savoir plus:
www.quefairemesdechets.fr

FR

日本

- 本製品は高い秘密性を有しておりますが、電波を使用している以上、第三者に通信を傍受される可能性がないとはいえません。この点をご理解いただいたうえでご使用ください。
- 本製品は、絶対に改造して使用しないでください。改造した機器を使用すると電波法に抵触します。

本製品は、電波法に基づく特定無線設備の技術基準適合証明などを受けており、その証は本製品の本体内で確認できます。本製品のねじを外して内部の改造を行った場合、技術基準適合証明などが無効となります。技術基準適合証明などが無効となった状態で使用すると、電波法に抵触するため、絶対に使用しないでください。

5GHz 帯ご使用上の注意

- 本製品の無線LAN (Wi-Fi) 機能は5GHz帯を使用します。電波法により5.2GHz帯および5.3GHz帯の屋外利用は禁止されております。(5.2GHz帯高出力データ通信システムのアクセスポイント / 陸上移動中継局と通信する場合を除く。) 本製品が使用するチャンネルは以下の通りです。

IEEE802.11 a/n/ac/ax			
J52	W52	W53	W56

J52 (5.2GHz帯 / 34, 38, 42, 46ch)

W52 (5.2GHz帯 / 36, 40, 44, 48ch)

W53 (5.3GHz帯 / 52, 56, 60, 64ch)

W56 (5.6GHz帯 / 100, 104, 108, 112, 116, 120, 124, 128, 132, 136, 140ch)



FAQ

For any product related question please visit
www.funtechinnovation.com/faq