

# innex DS200

## Document Scanner

### Quick Start Guide

**\*\*Welcome to the Innex DS200 Document Scanner!\*\***

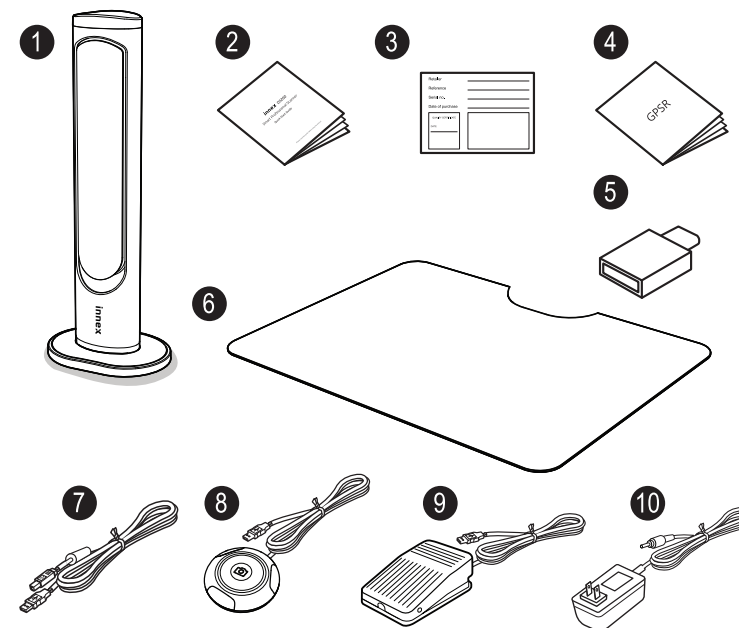
This versatile scanner is engineered to boost your productivity with its powerful 21-megapixel sensor. Say farewell to the hassle of tedious scanning tasks. With the Innex DS200, you'll enjoy efficient, high-quality scanning that transforms your document handling process. Let's dive in and start making your scanning experience seamless and productive!

Before using the DS200 Document Scanner, please visit the following website to download the exclusive scanning software, InnexScan: [www.funtechinnovation.com/download](http://www.funtechinnovation.com/download)  
InnexScan unlocks a wide range of features, including document and book scanning, OCR (Optical Character Recognition) to recognize text and export the results in PDF, Word, or Excel formats, barcode scanning, and much.



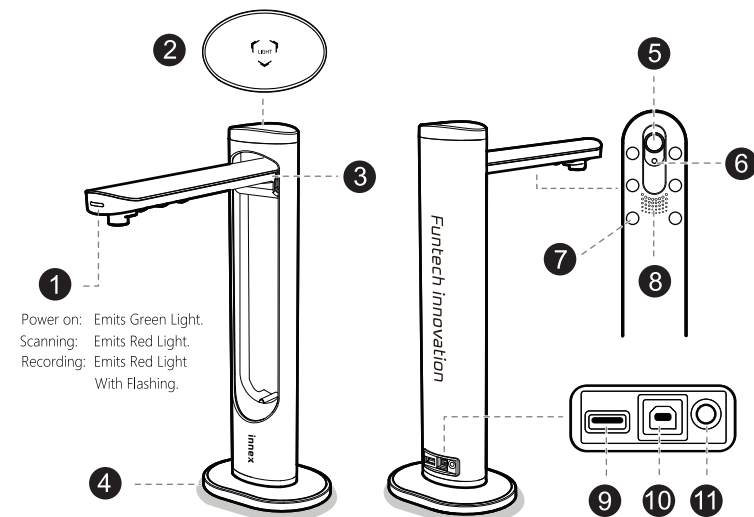
### Package Content

- |                         |                   |
|-------------------------|-------------------|
| 1. DS200                | 6. Scanning Pad   |
| 2. Quick Start Guide    | 7. USB Cable      |
| 3. Warranty Card        | 8. Hand Button    |
| 4. GPSR statement       | 9. Foot Pedal     |
| 5. USB-C to USB Adapter | 10. Power Adapter |



### Function description

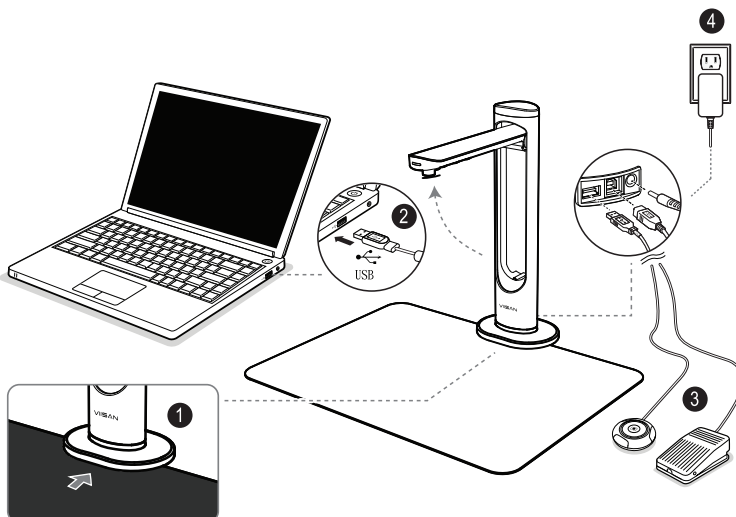
1. LED Indicator
2. LED on/off Touch Switch
3. Foldable Hinge
4. Base
5. Main Lens
6. Laser Head
7. Led Lamp \*6 PCS
8. Build in Microphone
9. USB Hub for Hand button or Foot Pedal Connection
10. USB B port for PC Connection
11. DC-in



### Hardware Installation

**WARNING!** Only use the USB cable and the power adapter supplied with DS200, using other power support may induce risk

1. Place the scanning pad in front of the DS200 and unfold the DS200 arm.
2. Connect the supplied USB cable to the back of the scanner and plug the other end into an available USB port on your computer.
3. Attach the supplied external [Hand Button] or [Foot Pedal] to the USB hub on the back of the scanner.
4. Connect the supplied Power Adapter to the DS200's DC IN port and plug the other end into a power outlet.




NOTE: Ensure the scanning pad is in contact with the scanner base.

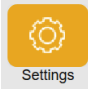

### Getting Software started






1. To start the program, double-click the InnexScan software icon on the desktop or select the InnexScan program from the Windows Start Menu.



- For macOS, go to the Applications folder and click on the InnexScan app.
2. Click the laser icon  on the toolbar to turn on the laser positioning.
  3. Place an open book face up on the scanning pad and align the center of the book with the laser positioning "+" mark.
  4. Select the [Book] function tab from the main menu, then click the [Scan] button to scan a page. You can also enable the software page-turning detection feature. When the scanner detects a page is turned, it will automatically start continuous scanning.

InnexScan software provided the following functions. You can select a function mode by clicking the menu tab.

Mode	icon	Description
Quick Scan		The Quick Scan function enables you to configure a button for specific scanning tasks. This feature allows you to perform predefined scans swiftly and efficiently with just one press of a button.
Photo		The Photo Mode allows you to use the DS200 to capture snapshots and save them in BMP, PNG, or TIFF file formats. This feature makes it easy to quickly take high-quality photos and store them in various formats for your convenience.

Document		The Document Mode is designed for scanning documents, business cards, ID cards, or any paper sheets. This feature includes powerful image processing algorithms that can repair damaged edges of documents and rotate pages based on text orientation. It allows you to scan directly to JPEG or PDF files and even create OCR (Optical Character Recognition) to convert scanned files into editable Word, Text, or Excel formats.
Book		The Book Mode is designed for scanning books or magazines. This feature includes advanced processing capabilities such as automatic scanning, flattening curved pages, erasing finger images, purifying the background, and splitting pages. It ensures that scanning books and magazines is efficient and produces high-quality results.
Barcode		The Barcode Mode is designed for scanning and recognizing barcodes and QR codes. This feature allows you to save the results directly into JPEG, Text, Excel, or PDF formats, making data management easy and efficient.
Visualizer		The Visualizer function enables you to record video tutorials or share your laptop screen with a connected projector or HDTV. This feature ensures seamless presentations and instructional recordings, making it easier to share your content on larger displays.
OCR		The OCR function enables you to convert a batch of scanned images into searchable PDFs or editable Word, Excel, and Text formats. It supports over 100 different languages, ensuring versatility and accessibility for users around the world.

### Specifications

Image Sensor : 20.1-Megapixel CMOS Sensor  
Max. Resolution : Optical: 5120 X 3920 Pixels (20.1MP)  
Software Interpolation: 5888 x 4522 pixels (26MP)  
Output DPI : A3 (Approx. 300dpi)  
Max. Shooting Area : A3 ( 426 x 320 mm)  
Scanning Speed : 1.5 sec. per A3 page  
Color Bit Depth : 24 bit  
Lens Focus : Fixed  
Laser Projection : Built-in  
Light Source : Built-in High-brightness LED  
Status-LED : Scanning: Green-light flashing;  
Video Recording: Red-light flashing  
Scanning methods : Hand Button, Foot Pedal, Software Button, Auto-Scan  
Output Format : Picture: JPG, TIFF, BMP, PNG Document: PDF(Image),  
PDF (Searchable), PDF(Text), Excel, Word, Txt E-book: EPUB  
Text To Speech: MP3, WAV Video: AVI, MPEG, FLV, WMV  
\* Mac version software does not support TTS  
Video Compression : MJPG  
Interface : USB 2.0 Type B x 1 (For PC Connection)  
USB 2.0 Type-A x 1 (For USB Extension)  
Power : USB-Powered, 5V /1A  
Dimension : Folded size:110 (L) X 150 (W) X 402 (H) mm  
Working size: 307 (L) X 150 (W) X 402 (H) mm  
Net Weight : Approx. 1.2kg

#### System Requirements For InnexScan

Intel i5 Processor or Higher  
USB 2.0 Port  
At least 8GB RMB (Recommended 16GB or Higher)  
20GB Available HDD Space  
Microsoft® Windows® 11 · 10 · 8.1 · 8 · 7  
macOS® 10.15 or later