



innex Connect Pro+

One Click. Infinite Collaboration



4K Screen Share



Camera Streaming



Plug & Play



Touch Back Control



Multi-Device Sharing



Multi-Screen Sharing



Data Security

Boosts Meeting Efficiency

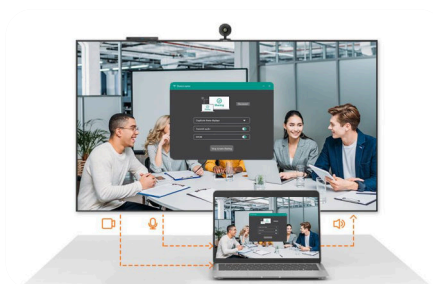
Innex Connect Pro+ is a plug-and-play wireless conferencing system. Just one click to wirelessly connect your laptop to the room's display, camera, and audio—no cable, no hassle.



Connect Pro Button




Airplay / Miracast/ Chromecast



Connect Pro Software



Contact

 funtechinnovation.com

 info@funtechinnovation.com

Follow us



Transform Any Display into a Smart Conference Hub

Innex Connect Pro+ features HDMI and USB ports for cameras, touchback control, and peripherals. It is compact, powerful, and easy to install.

1 Camera & Touchback Integration

- **Wireless camera streaming** – Connect cameras via USB to stream seamlessly to your laptop.
- **Touchback control** – Connect to touchscreen displays to control your laptop wirelessly.
- **Peripheral support** – Connect external devices such as keyboards, mouse, etc.



2 Wireless Video Output

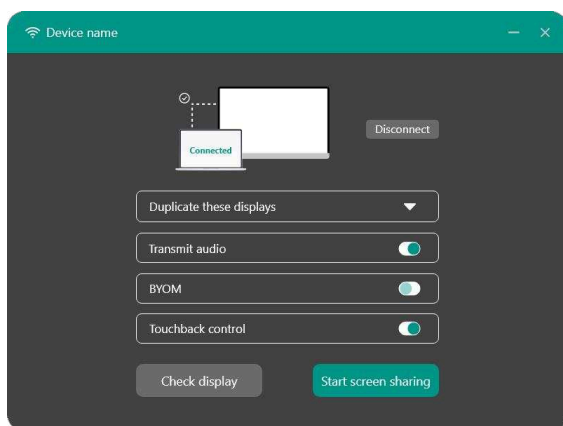
- Wirelessly cast your laptop screen to room displays in up to 4K resolution.

3 Connect Pro Button Pairing

- Pair multiple Connect Pro Buttons for collaborative spaces and shared device environments.

Ultimate Wireless BYOM Solution!

- **BYOM Conferencing** – Enables users to wirelessly host meetings from their laptops.
- **Wireless Casting** – Share content instantly.
- **Touchback Control** – Control your laptop from a touchscreen display.
- **Multi-screen sharing** – Multiple users can present simultaneously, enhancing teamwork.



Connect Pro Software

Connect Pro Software enables wireless screen casting, audio transmission, and BYOM functionality, with flexible sharing modes. Making it ideal for large-scale enterprise deployment with its intuitive interface and easy management.

innex Connect Pro+ **SPECS**

Model		Connect Pro+
Receiver	Wi-Fi	Wi-Fi 6E support 2.4G / 5G
	I/O Ports	USB-A 2.0 x3
		USB-C for pairing x1
		HDMI Out x1
		DC In x1
	LED Status	Power on: Flashing blue light (slow)
		Pairing: Flashing purple light (fast)
		Pairing successful: Flashing blue light (fast)
		Screen sharing: Static blue light
		Pairing failed: Flashing red light
		Working abnormally: Static red light
	Switch	Power on/off switch
	Power	12V 1.5A
	Storage Temperature	-10 °C (14°F)- 60 °C(140°F)
	Operation Temperature	0 °C (32°F)- 40 °C(104°F)
	Operation Humidity	≤80%
Button	Screen Share Resolution	3840x2160 @30Hz; 1920x1080 @60Hz
	BYOM Camera Resolution	1080P, 720P
	Wi-Fi	RF module DCT11232511
	I/O Ports	USB-C (male) x1
		USB-C (female) x1 for power pass through
	LED Status	Connecting / Pairing in progress: Flashing red light
		Connection / Pair succeed: Flashing white light
		Screen sharing: Static white light
		Failed to connect / pair: Flashing red light
		Working abnormally: Static red light
	Power	5V 500mA
	Storage Temperature	-10 °C (14°F)- 60 °C (140°F)
	Operation Temperature	0 °C (32°F)- 40 °C (104°F)
	Operation Humidity	≤80%
Package Contents	Connect Pro+ Receiver, Connect Pro Button x2, 3M Power adapter with multi-country plug set, Wall mount kit, Cable organizer x2, Quick start guide, Warranty card, Safety document	