



# innex Connect Pro+

## One Click. Infinite Collaboration



4K Screen  
Share



Camera  
Streaming



Plug &  
Play



Touch  
Back  
Control



Multi-  
Device  
Sharing



Multi-Screen  
Sharing



Data  
Security

## Boosts Meeting Efficiency

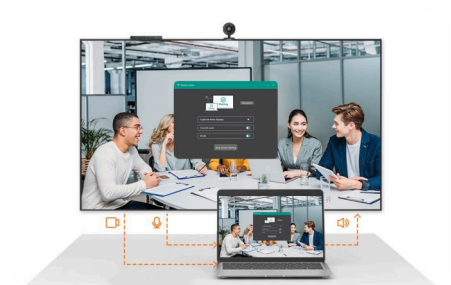
Innex Connect Pro+ is a plug-and-play wireless conferencing system. Just one click to wirelessly connect your laptop to the room's display, camera, and audio—no cable, no hassle.



Connect Pro Button



Airplay / Miracast/ Chromecast



Connect Pro Software



### Contact

 funtechinnovation.com

 info@funtechinnovation.com

### Follow us



## Transform Any Display into a Smart Conference Hub

Innex Connect Pro+ features HDMI and USB ports for cameras, touchback control, and peripherals. It is compact, powerful, and easy to install.

### 1 Camera & Touchback Integration

- **Wireless camera streaming** – Connect cameras via USB to stream seamlessly to your laptop.
- **Touchback control** – Connect to touchscreen displays to control your laptop wirelessly.
- **Peripheral support** – Connect external devices such as keyboards, mouse, etc.



### 2 Wireless Video Output

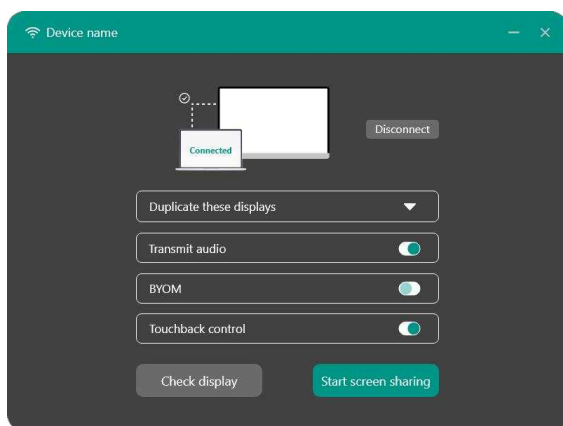
- Wirelessly cast your laptop screen to room displays in up to 4K resolution.

### 3 Connect Pro Button Pairing

- Pair multiple Connect Pro Buttons for collaborative spaces and shared device environments.

## Ultimate Wireless BYOM Solution!

- **BYOM Conferencing** – Enables users to wirelessly host meetings from their laptops.
- **Wireless Casting** – Share content instantly.
- **Touchback Control** – Control your laptop from a touchscreen display.
- **Multi-screen sharing** – Multiple users can present simultaneously, enhancing teamwork.



## Connect Pro Software

Connect Pro Software enables wireless screen casting, audio transmission, and BYOM functionality, with flexible sharing modes. Making it ideal for large-scale enterprise deployment with its intuitive interface and easy management.

# innex Connect Pro+ **SPECS**

Model		Connect Pro+
Receiver	Wi-Fi	Wi-Fi 6E support 2.4G / 5G
	I/O Ports	USB-A 2.0 x3
		USB-C for pairing x1
		HDMI Out x1
		DC In x1
	LED Status	Power on: Flashing blue light (slow)
		Pairing: Flashing purple light (fast)
		Pairing successful: Flashing blue light (fast)
		Screen sharing: Static blue light
		Pairing failed: Flashing red light
		Working abnormally: Static red light
	Switch	Power on/off switch
	Power	12V 1.5A
	Storage Temperature	-10 °C (14°F)- 60 °C(140°F)
	Operation Temperature	0 °C (32°F)- 40 °C(104°F)
	Operation Humidity	≤80%
Button	Screen Share Resolution	3840x2160 @30Hz; 1920x1080 @60Hz
	BYOM Camera Resolution	1080P, 720P
	Wi-Fi	RF module DCT11232511
	I/O Ports	USB-C (male) x1
		USB-C (female) x1 for power pass through
	LED Status	Connecting / Pairing in progress: Flashing red light
		Connection / Pair succeed: Flashing white light
		Screen sharing: Static white light
		Failed to connect / pair: Flashing red light
		Working abnormally: Static red light
	Power	5V 500mA
	Storage Temperature	-10 °C (14°F)- 60 °C (140°F)
	Operation Temperature	0 °C (32°F)- 40 °C (104°F)
	Operation Humidity	≤80%
Package Contents	Connect Pro+ Receiver, Connect Pro Button x2, 3M Power adapter with multi-country plug set, Wall mount kit, Cable organizer x2, Quick start guide, Warranty card, Safety document	