

# innex EU Series

Google EDLA Certified Interactive Display

## Seamless Integration With Google Tools



Google EDLA  
Certified



Responsive  
Touch



Windows Ink  
Compatible



AI Camera  
& 8 Mics



Wireless  
Conferencing



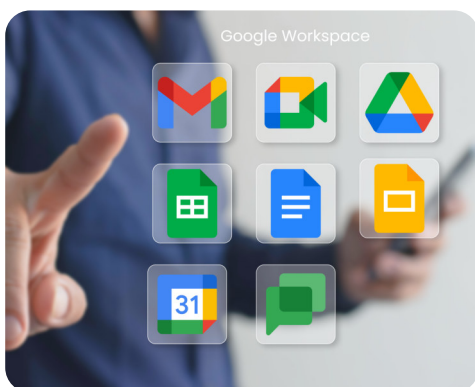
Camera  
Streaming



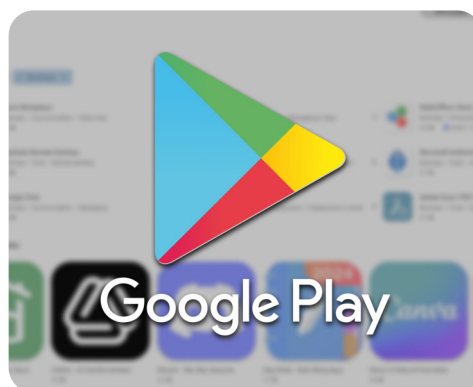
User-Centered  
Design

### What is EDLA Google Certification?

Google's EDLA (Enterprise Device Licensing Agreement) certification ensures that the EU Series is fully compatible with Google services and applications. This certification brings unmatched reliability, seamless integration with Google Workspace, and complete access to the Google Play Store.



Seamless Integration with  
Google Tools



Official Access to the  
Google Play Store



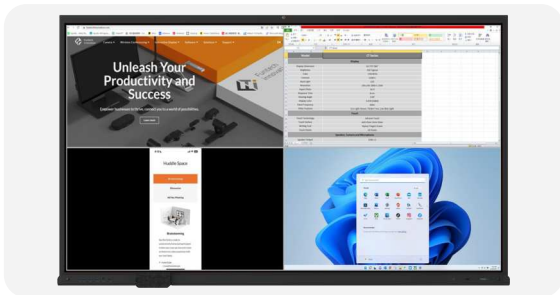
Safe Downloads with  
Google Play Protect





## Discover a World of Unlimited Potential!

Innex EU Series is an all-in-one Google EDLA-certified display designed to empower teams with seamless collaboration and idea generation. It allows users to download apps securely while offering comprehensive support for hybrid working environments. Whether it's bringing your own meeting or connecting with your team, the EU Series ensures smooth communication and productivity anytime, anywhere.



### Multi-Screen Sharing

Innex EU Series transforms any space into a meeting room with its wireless conferencing capabilities. It supports multi-screen casting and responsive touchback control for an enhanced meeting experience.



### Built-In AI Camera

Experience intelligent video and audio through the integrated AI-powered camera. Features such as EPTZ, Auto-Framing, Smart Gallery, Speaker Tracking, and crystal-clear audio ensure immersive meetings.



### Responsive Touch Technology

Innex EU Series utilizes advanced infrared touch technology, providing a natural and responsive writing and touch experience. Whether using your finger or the included pen and eraser, interaction feels precise and intuitive.



### Windows Ink Compatibility

The EU Series is fully optimized for Windows Ink and Office365. It ensures smooth writing, drawing, and annotation experiences for brainstorming, presentations, and collaboration.



## Smart Collaboration, Simplified Interaction!

The Innex EU Series blends functionality, aesthetics, and ergonomics for an intuitive user experience, making control easy and efficient for users standing in front of the display.



### Ergonomic Upward Control Buttons

The Innex EU Series features upward-facing control buttons, blending functionality, aesthetics, and ergonomics. This layout ensures easy recognition and operation for users standing in front of the display.

### High-Precision Dual-Tip Stylus

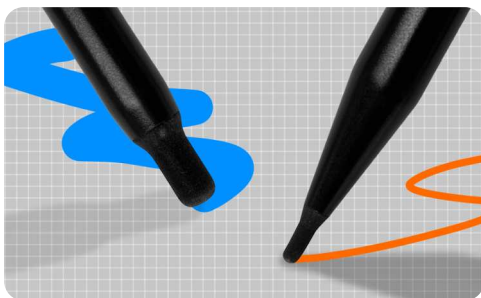
Equipped with a dual-ended high-precision touch pen, the built-in whiteboard software recognizes input from both ends, allowing you to seamlessly switch between two writing colors with a single pen.

### Handy Remote Control

Streamline your experience with a versatile remote control. It seamlessly manages both the built-in camera and display functions, eliminating the need for extra software. Adjust camera modes, viewing angles, and settings effortlessly.

### Convenient Pen Slot with an Eraser

The Innex EU Series features a convenient pen slot with an integrated eraser, keeping your tools organized and easily accessible. Quickly switch between writing and erasing, streamlining collaboration and boosting productivity.



High-precision dual-tip stylus



Handy Remote Control



Pen Slot with an Eraser

# innex EU Series **SPECS**

Model	EU65	EU75	EU86	
<b>Display</b>	Display Dimension	65"	75"	86"
	Active Area	1428 × 804mm (49.1 x 31.2in)	1650 × 928mm (65 x 36.5in)	1895 × 1066mm (74.6 x 42in)
	Brightness	450 Typical		
	NTSC	72%		
	Dynamic Contrast	5000:1		
	Glass Hardness	8H		
	Glass Thickness	3.2mm / 0.12in		
	Bonding Type	Zero bonding		
	Back-Light	D-Lit LED		
	Resolution	Ultra HD 3840 x 2160		
	Aspect Ratio	16:9		
	Response Time	8ms Typical		
	Viewing Angle	178°		
	Display Color	1.07B		
	Panel Frequency	60Hz		
Other Features	Eco-Light Sensor, Flicker Free, Low Blue Light			
<b>Touch/ Interactive</b>	Touch Technology	Infrared Touch		
	Touch Points	20 Points in Android / 40 Points in Windows		
	Accuracy (over 90% area)	± 1mm (± 0.04in)		
	Minimum Object Size	2mm (0.1in)		
	Touch Resolution	32768×32768		
	Touch Surface	Anti-Glare Glass		
	Touch Tool	Stylus, Finger, Eraser		
	Pen Type	Passive pen		
	Pen Tip Diameter	3mm (0.12in) / 8mm (0.31in)		
	Palm Rejection	YES		
	Touch Response Time	≤3.33ms		
Single point scan time	≥300Hz			
<b>Speaker, Camera and Microphone</b>	Speaker Output	Built-in Speaker 20W x 2, Subwoofer 20W x1		
	Built-in Camera	13MP Sony IMX258 sensor with FOV 120°		
	Microphone	8-Mic Array with Auto Gain Control/ ANR/ AEC		
	Camera Features	Support Remote Control; Support Auto-Framing, Gallery, Speaker Tracking, Manual Mode		
<b>Embedded Operating System</b>	Operating System	Android 13.0 EDLA Certified		
	Chip	RK3588		
	RAM	8GB		
	ROM	128GB		
	CPU	A76x4 + A55x4		
	GPU	Mali-G610 MC4		
	NPU	Up to 6TOPs		

# innex EU Series **SPECS**

Model		EU65	EU75	EU86
I/O Ports	Front	USB-B 3.0 x1 (for touch)		
		USB-A 3.0 x3 (Public)		
		USB-C x1 (DP Alt 1.2 4k@60 in, USB 2.0, PD 20V/3.25A, 100M Ethernet)		
		HDMI In x1 (HDMI 2.0b)		
	Rear	HDMI In x1 (HDMI 1.4b x1 with ARC + HDMI passthrough to HDMI out & USB-C out)		
		HDMI In x2 (HDMI 2.0b)		
		HDMI Out x1		
		DP In x1		
		USB-A 2.0 x1 (Public)		
		USB-A 3.0 x2 (Public x1, Android x1)		
		USB-C x1 (DP Alt 1.2 4k@60 in, USB 2.0, PD 20V/3.25A)		
		USB-C Out x1 (DP out, USB 3.0 host, PD 5V/1A)		
		USB-B 3.0 x1 (for touch)		
		Earphone Out x1		
		Optical Out x1		
		RS232 x1		
		RJ45 In / Out x2 (1000M)		
		TF (SD Card) x1		
		MIC In x1		
OPS Slot x1				
AC In x1				
Power	Power Supply	100V - 240V AC		
	Consumption	Maximum ≤ 250W	Maximum ≤ 350W	Maximum ≤ 450W
	Standby Mode	Yes		
Operating & Storage Environment	Operating Temperature	0 °C (32 °F) - 45 °C (113 °F)		
	Storage Temperature	-20 °C (-4 °F) - 60 °C (140 °F)		
	Operating Humidity	10% - 90%		
	Storage Humidity	10% - 90%		
Physical Spec	Product Dimension	1505 x 930 x 170mm (59.3 x 36.6 x 6.7in)	1725 x 1055 x 170mm (67.9 x 41.5 x 6.7in)	1970 x 1192 x 170mm (77.6 x 47x 6.7in)
	Package Dimension	1580 x 220 x 1000mm (62.2 x 8.7 x 39.4in)	1790 x 220 x 1165mm (70.5 x 8.7 x 45.9in)	2045 x 220 x 1280mm (80.5 x 8.7 x 50.4in)
	Net Weight	40kg (88.2lbs)	52.5kg (115.7lbs)	67kg (147.7lbs)
	Gross Weight	48kg (105.8lbs)	62.5kg (137.8lbs)	74.5kg (164.2lbs)
	VESA Mount Point	500 x 400mm (19.7 x 15.7in)	600 x 400mm (23.6 x 15.7in)	800 x 400mm (31.5 x 15.7in)
Sensor	NFC	YES		
	Motion Detection	YES		
Compliance & Certification	Regulatory Certification	CE, FCC, BSMI		
Accessories Box		Remote control x1, High-precision dual-tip stylus x2, Eraser x1, NFC card x3, Warranty card x1, Quick start guide x1, Safety document x1		
Accessories Bag		1.5M (4.9ft) HDMI Cable x1, 1.5M (4.9ft) USB B-A Cable x1, 3m (9.8ft) Power Cable (USA/EU/UK x1 each), Wall Anchor x8, Self-tapping Screw x8		